



Wood Turners Worldwide

worldwidewoodturners.org and the art of making shavings

Newsletter

JUNE 18, 2025

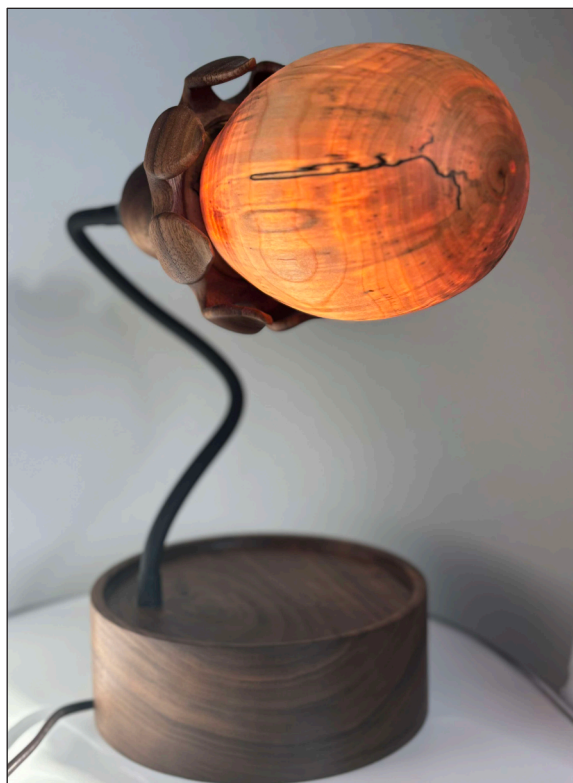
VOLUME 2 NUMBER 13



Jim Duxbury



Gonzalo DeLa Cruz



Austin Kliniskie



Charles Nelson III

Clockwise from top left: Turned cat and mice; Walnut hollow form; Maple burl bowl; Birch vessel with .5mm wall pressure fit into a carved walnut flower. Made with cannibalized 10\$ Walmart lamp and an led refrigerator bulb.



Gerald Avery



Jayson Cote



Doug Miller



Brenda Thornton

This page, clockwise from top left: Pine and poplar Beads of Courage box with a paduak knob inlaid with a courage bead; Skew cut flowers of lilac on a cherry base; Two sets of measuring spoons for a craft fair; Mesquite square bowl with laser fractal burn design; Ambrosia maple bowl, twice turned. **Facing page, clockwise from top left:** Mahogany, birch plywood, and yew segmented vase; Walnut vessel with maple basket illusion lid, replica arrowhead mounted with hot glue and sinew; Spalted cherry bowl; "Eye of the Nebula," siberian elm cut on the property of the Starkweather Art Gallery in Romeo, Mich.



Billy Burt



Kieth Hyland



Howard King



Tom Kenny



Mark Wallace

**Your art belongs in our newsletter!
Email hi-res images to
editor@worldwidewoodturners.org.
Include a brief description and make
sure you identify yourself!**

Attaching carved handles to vessels



By Patrick Haggard

My process for attaching carved handles to vessels.



Once the vessel is turned and the handle is carved to fit the vessel, I draw a line along the longitudinal axis of the vessel. Next, you hold the handle(s) on center of the line where you want them to be attached. From here, mark on the line where to drill and place the brad pin & on the mating handle. For the pins, I have had great success using 18 gauge wire brad pins.

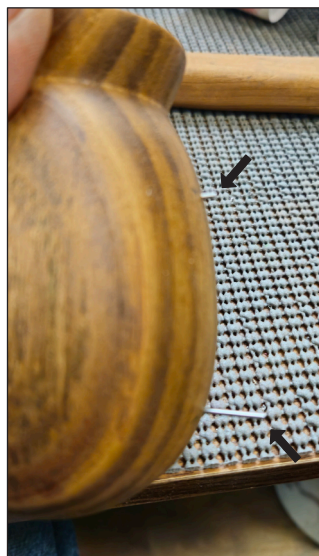
After marking the handle locations, chuck a brad pin into the drill, and drill the matching hole(s) into the vessel & the corresponding handle. Be sure to drill as horizontal as possible for a proper mating surface once attached. On the vessel, drill 1/2 the wall thickness for the brad pin depth and approximately the same for the handle side.



Now, tap the brad pin into the vessel hole made earlier, and then trim the pin to the length needed for the handle. Basic wire nips/side cutters work well for this.

Time for the test fit: make sure the handles mate flush with the vessel surface. If they don't identify the

issue and correct. Possible problems are the pins are too long, and need clipping or the mating handle profile needs additional profiling to match the vessel contour.



Once you are satisfied with the handle location and the fit; mix up some epoxy (your choice, but don't use a slow-set) and place a small dab on the handle side, and attach them onto the vessel. Be sure to be attentive to using just a dab or you will be creating excessive squeeze-out to clean up.

This is the easiest way I have found to attach handles without having to sit and hold them until the glue sets up.



A Tribute to Cap'n Eddie Castelin from the Worldwide Woodturners Group

On behalf of the Worldwide Woodturners Group, we extend our deepest gratitude to you, Cap'n Eddie Castelin, for your extraordinary contributions to the art and craft of woodturning.

As the founder of WorldwideWoodturners.org, you created far more than just a website — you built a thriving global community united by a shared passion for woodturning. Your vision, energy, and generosity have inspired countless individuals, from those picking up a turning tool for the first time to seasoned artisans honing their lifelong craft.

Through your dedication, woodturning has become more than a skill — it has become a bridge across generations and continents. You have encouraged learning, sparked creativity, and fostered a spirit of sharing and camaraderie that continues to flourish.

Cap'n Eddie, your legacy lives on in every bowl turned, every tool sharpened, and every person who discovers the joy of woodturning because of your influence. You reminded us never to be satisfied with the status quo, to keep learning, and to always see the bigger picture.

For your continual efforts to master and teach the art of turning, for your tireless dedication to sharing knowledge, and for your unwavering commitment to building a worldwide community — we honor you, we thank you, and we carry your spirit forward.

With heartfelt appreciation,
The Members of Worldwide Woodturners



Roger Wollam demonstrated his process for creating this open segmented vase out of mahogany, maple, walnut, and sapele during our weekly meeting June 11th.

If you are unable to attend, Word Wide Woodturners publishes videos of the full meetings, or, just of our weekly demonstrations, on our YouTube channel, @worldwidewoodturners1.

World Wide Woodturners meets weekly at 7:00 pm EST via Zoom. You can attend World Wide Woodturners meetings by going to worldwidewoodturners.org and clicking the button that says, "Click to go to meeting."





Ray Apodaca



Dale Slaughter



Sandi Swayze



Scott Medori



Lonnie Weidner

Level-up



- 3 Full Days of Demonstrations
- 4 Complete Turning Pods



Instructors

Dean Grimes	Jeff Walters
Kade Bolger	Brent Sobotka
Billy Burt	Roger Wollam
Tim Hatch	Dan Smith
Paul Hannaby	Dave Rhodes
Martin Clarkson	Sue Jilek
Gary Hales	Jim Duxbury
Matt Harber	Rita Duxury
Joaquin Juatai	

September 17-20 2026
Wisconsin Rapids Wisconsin

Tuition Cost \$160

Includes all training &
Evening Meal

Hotel Accomodations are now available.

Tools

Gallery

Friends

levelup@worldwidewoodturners.org

More details to come!!!

Wood Turners Worldwide

©2025 by
worldwidewoodturners.org
Capt. Eddie Castelin - Founder this work is openly licensed by
Dane Chandler - Administrator CC BY-NC-ND. For more
David Rhodes - Webmaster information visit
Joaquin Juatai - Editor creativecommons.org/licenses/by-nc-nd/4.0/



Top left: Ebonized oak bowl; **Middle left:** Various multi-axis pendants turned using the Dux Chuck. **Top right:** Madrone bowl with turquoise resin inlay. **Middle right:** Maple burl bowl. **Bottom right:** Maple bowl with leather embellishment.